

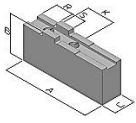


**THAME WORKHOLDING**

Field End, Thame Road  
 Long Crendon, Aylesbury  
 Bucks HP18 9EJ, England  
 Tel: 01844 208050  
 Email: sales@thameworkholding.com

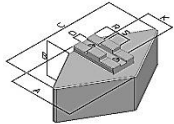


Fax: 01844 201699  
 Web: www.thameworkholding.com



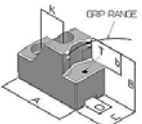
Type GS,GA

| Slot/Tenon Soft Top Jaws |     |     |    | Slot: 12mm | Tenon: 26mm | Hole Centres: 54mm |          |
|--------------------------|-----|-----|----|------------|-------------|--------------------|----------|
| Jaw Type                 | A   | B   | C  |            | Kg/Set      | Material           | Part No. |
| GS                       | 145 | 60  | 40 |            | 6.8         | 080M15             | CU32     |
| GS                       | 110 | 60  | 40 |            | 4.9         | 080M15             | CU321    |
| GS                       | 145 | 100 | 40 |            | 11.1        | 080M15             | CU323    |
| GS                       | 145 | 125 | 40 |            | 13.9        | 080M15             | CU324    |
| GS                       | 145 | 150 | 40 |            | 16.9        | 080M15             | CU325    |
| GS                       | 110 | 60  | 60 |            | 7.6         | 080M15             | CU326    |
| GS                       | 100 | 60  | 80 |            | 8.4         | 080M15             | DP32     |
| GS                       | 110 | 80  | 80 |            | 14.1        | 080M15             | CU328    |
| GS                       | 145 | 80  | 50 |            | 11.6        | 080M15             | CU329    |
| GA                       | 145 | 60  | 40 |            | 2.4         | Aluminium          | CW32     |



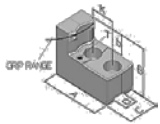
Type HS,HT,CF

| Slot/Tenon Diamond & Segment Jaws |     |    |      |  |      |           |      |
|-----------------------------------|-----|----|------|--|------|-----------|------|
| HS                                | 132 | 76 | 240  |  | 28.0 | 080M15    | CQ32 |
| HA                                | 133 | 76 | 240  |  | 10.5 | Aluminium | HT32 |
| IS                                | 148 | 51 | Ø305 |  | 23.0 | 080M15    | CF32 |

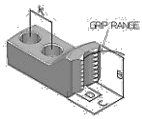


Type LY

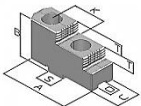
| Adjustagrip Hard Jaws - External Clamping |           |    |    |  |     |        |      |
|---|-----------|----|----|--|-----|--------|------|
|   | B         | C  | b  |  |     |        |      |
|   | 59        | 40 | 25 |  |     | 590M17 |      |
| Gripping Ranges                           |           |    |    |  |     |        |      |
|   | 67-191mm  |    |    |  | 4.0 |        | LY40 |
|   | 143-269mm |    |    |  | 4.0 |        | LY40 |
|   | 191-318mm |    |    |  | 3.2 |        | LY43 |
|   | 269-397mm |    |    |  | 3.2 |        | LY43 |



Available on request.



Available on request.

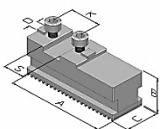


Type GX

| Hard Reversible Top Jaws |     |    |    |    |        |        |      |
|--------------------------|-----|----|----|----|--------|--------|------|
|                          | A   | B  | C  | T  | Kg/Set |        |      |
| GX                       | 105 | 62 | 36 | 15 | 3.2    | 590M17 | GX32 |



| Height Pins for Adjustagrips |    |     |        |      |
|------------------------------|----|-----|--------|------|
|                              | H  | WAF | Thread |      |
|                              | 5  | 13  | M8     | IU05 |
|                              | 10 | 13  | M8     | IU10 |
|                              | 15 | 13  | M8     | IU15 |
|                              | 20 | 13  | M8     | IU20 |
|                              | 25 | 13  | M8     | IU25 |



| Base Jaws |     |    |    |        |
|-----------|-----|----|----|--------|
|           | A   | B  | C  | Kg/Set |
| GBK       | 125 | 43 | 32 | 3.0    |

**Thame Workholding also design and manufacture jaws to suit your specific workpieces.**